

# news

October 2003



## Company News

### GeoMil goes Dutch !!!

Not always in life a partnership works out. Sometimes expectations don't match or promises can't be kept. Then the best solution is to separate.

This is what happened to the joint venture of GeoMil Equipment and Swedish Ing.firman Geotech AB. When Geotech took over the majority of GeoMil in 2000 the mutual expectations were high. However, the vast international activities of GeoMil and the constant market demand for new developments and high quality service required a more lean and efficient constellation.

For this reason the management of GeoMil Equipment took the opportunity of buying the assets of the company and with effect from 1st of October 2003 GeoMil restarts with a new outfit but under the same name.

Now GeoMil Equipment is owned by three members of the management and Dutch Icamat Holding.

Icamat provides unique machining capacity and efficiency. Therefore, it will prove to be an excellent, strong and professional partner for GeoMil in the future.

The new and lean company structure will allow GeoMil to continue the strongly client oriented market approach. New products will be released soon and even more effort will be spent on enhanced research and development.

GeoMil and its staff are looking forward to further and mutually profitable business relationships with all clients.

Our client's satisfaction will be our measure!

## Contents

### Company News

- GeoMil goes Dutch
- Tubes and more ...
- Road map to success

### Product News

- New cone design
- CPTest released
- New 15cm<sup>2</sup> subtraction cone
- Unique cable connectors

### Client News

- New CPT crawler to Lippens

### GeoMil's partner



### Tubes and more ...

With Icamat as new partner the most professional machining expert for our range of CPT tubes, casings and cone components was found.

Icamat produces on over 15 CNC lathe and milling machines of the latest industrial design. More than 17 years of experience in high quantity production will guarantee for the unique quality standard of GeoMil's CPT tubes. Thanks to the advanced production methods any quantity of CPT tubes will be available within 48 hours.

### Road map to success

The September 11th events and Iraq war had a severe impact on the international business activities. Investments in construction projects were down, yet today the market signs give hope for new and enhanced activities.

In the meantime GeoMil did not simply lay back but we adjusted our business policy to the changing demands.

- By going Dutch GeoMil is able to lower its overhead substantially.
- By focussing on synergy partnerships the costs for both new developments and consumable production have been lowered.
- By analysing our strong but also weak abilities, we decided to enhance design, service and sales activities while outsourcing the production of standard consumables.
- By improving efficiency we could shorten our lead times and increase capacity for innovations and client service.
- The use of first class OEM products from prominent suppliers allows GeoMil to guarantee for highest standards. This has amongst others lead to the unique 3 year warranty on our crawlers and trucks.

All together a successful road we have chosen. We like to invite all our clients to come along.

## Product News

### New cone design

Existing CPT cones are either measuring the cone resistance and sleeve friction in compression mode or subtraction mode.

Clients carrying out CPT tests in problematic soils prefer the robust subtraction cone design. Here the straining gauged measuring load cells - for both cone and friction - form one single and rigid body, less vulnerable for bending.

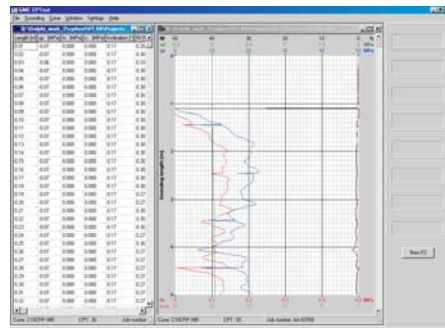
The compression design is based on two independent load cells, whereby the range of the friction load cell is more sensitive than for the subtraction design. In the new cone design the GeoMil engineers found a smart way to combine the advantages of both options, without the necessity of using a lot of different components. The modular design provides utmost flexibility to the client, as to the selection of load cell ranges, pore pressure transducer or inclinometers.

The new cone comes with a newly designed electrical board, providing both analogue and digital data output. Depending on the clients data acquisition and data transfer system (cordless or cable transmission), the appropriate output can be selected. In case of cable transmission, it is evident that the new cone is equipped with the unique cable connector type - see this volume.

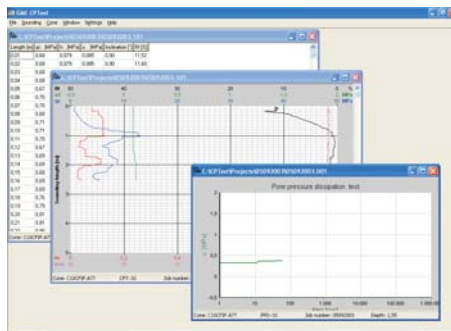
Starting with a 10cm<sup>2</sup> type, GeoMil will release a 15cm<sup>2</sup> new cone design soon.

### CPTest released

With CPTest GeoMil developed a powerful, multi functional and future oriented 32bit CPT acquisition and presentation software for Windows<sup>(c)</sup> environments (95 and higher).



All CPT data, whether for mechanical or electrical CPT, are processed and displayed in both numerical and graphical format. In addition CPT and dissipation graphs can be printed on site. GEF im- and export functions guarantee for universal ASCII data exchange.



A free demo version can be ordered from GeoMil to test the software. The full version comes with a hardlock protection key and complete manual.

### New 15cm<sup>2</sup> subtraction cone

According to most standards for CPT the friction sleeve of 15cm<sup>2</sup> cones need to have a surface area of 225cm<sup>2</sup>. Furthermore the cylindrical length of the cone, measured from the lower edge of the friction sleeve, has to be of a

minimum length, varying according to the applied standard.

The new GeoMil friction sleeve for cones of the S15 type in addition with the modified cylindrical end piece comply to all existing standards.



- 225cm<sup>2</sup> friction sleeve (New)
- short cylindrical end piece (New)
- tapered cross-over from 44mm to 36mm, standard thread

### Unique cable connectors

GeoMil introduced its new cable design for the full range of all GeoMil cones, providing a high grade of flexibility for the user.

Regardless of the cone type one type of cable is used. Because of its well thought-out design - one type of connector is used - both sides of the cable allow for connecting to either the data acquisition system or the cone. In addition, it allows for joining two or more cables - without the need for special connectors or adapter cables.

The new cable will be available in standard lengths of 2.25, 10, 30 and 50 meter. Since any combination of these cables can be used, nearly every total length of cable can be achieved.

In short, the advantages of the new design can be listed as follows:

- Only one type of connector, no difference in cone, computer or extendable connector
- Utmost flexibility: join as many cables as you like
- One cable for all cones
- Standard lengths, always on stock and reasonably priced

## Client News

### New CPT crawler to Lippens

Lippens Geotechniek ordered the second CPT cabin crawler from GeoMil within 2 years. Based on the new Caterpillar 320 CL undercarriage and powerpack GeoMil designed a 18 ton heavy duty working unit.

Due to custom designed removable ballast blocks which can be locked to the lowers, the crawler can reach a pushing capacity of 200 kN.

The track shoes are fitted with Nylon

pads to prevent damage to road surfaces when manoeuvring.

